

Partnership. Performance.



FOR LEASE

- A 5.72 acre site strategically located along Highway 2A/ Southridge Drive with close proximity to Highway 7
- 1,152 and 1,650 sf available on a major retail node already home to Walmart, Canadian Tire, Sobeys, Starbucks, and other national retailers
- Site anchored by Visions Electronics, Pet Smart, Dollar Tree, Browns Socialhouse, Canadian Brewhouse, and Burger King
- Available immediately

Arlyn Stoik, Principal
780.429.7552
arlyn.stoik@avisonyoung.com

Curtis Friesen, Associate
780.702.0692
curtis.friesen@avisonyoung.com

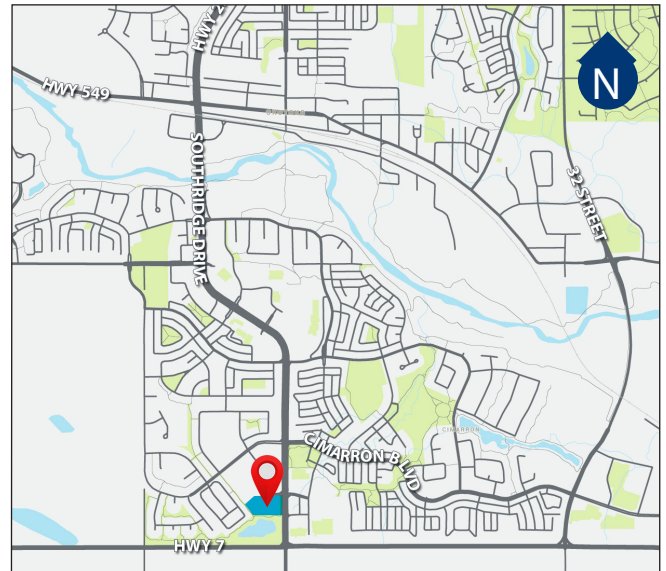
WESTMOUNT VILLAGE

200 SOUTHRIDGE DRIVE
OKOTOKS, AB

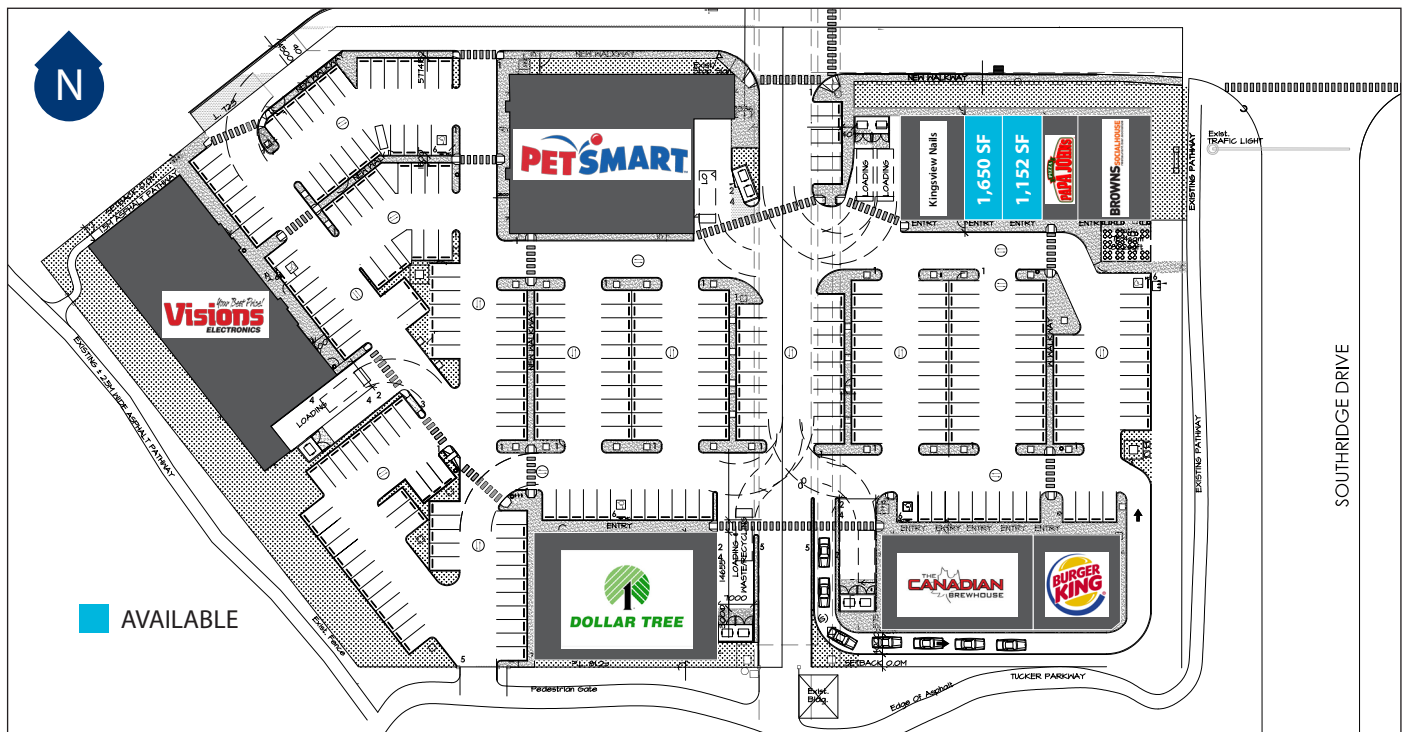
Property Details

- Okotoks is the largest urban centre between Lethbridge and Calgary in Southern Alberta
- 10th fastest growing community in Canada with 42.9% growth between 2006 - 2011
- Okotoks has population of 30,466 (2014), with a trade area population of approximately 100,000
- Okotoks is a very affluent municipality, with an average household income of \$125,073 (2014)
- Close proximity to Highway 2A and Highway 7 intersection which services 79,150 vehicles per day

Location Map



Site Plan



Intelligent
Real Estate
Solutions

