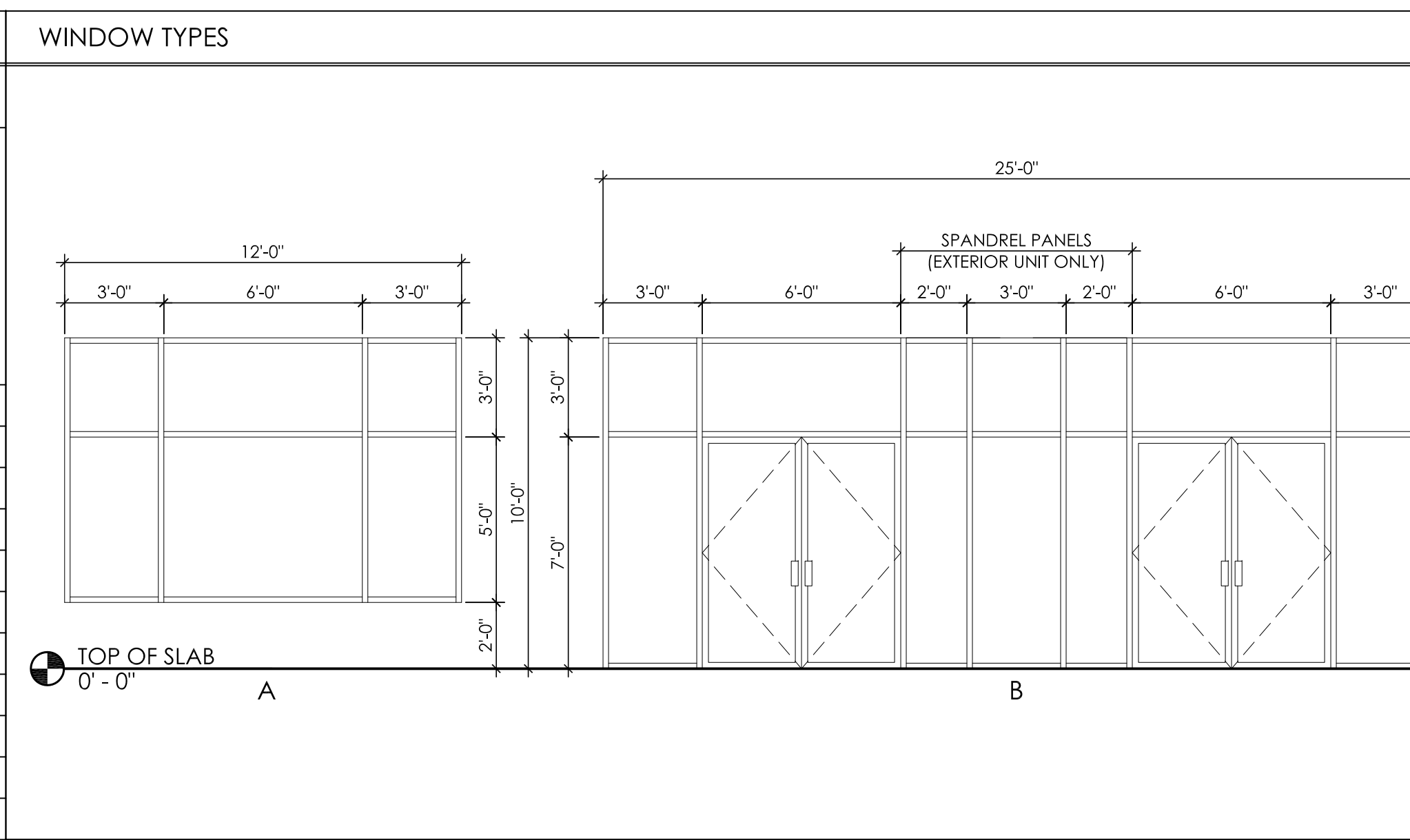


HARDWARE SCHEDULE	DOOR SCHEDULE													
	DESCRIPTION	NOMINAL DOOR SIZE	F.R.	DOOR			FRAME			HARDWARE	REMARKS			
				MATERIAL	FINISH	GLAZING	MATERIAL	FINISH						
NOTE: REFER TO VISIONS PRODUCT BOOK FOR COMPLETE SPECIFICATIONS.														
88-H1 DOOR HINGES IVES 32314.5X445S-HRP														
88-H8 PANIC EXIT HARDWARE IVES 22EO-687														
88-H3 DEADBOLT HAGER 3215C														
88-H4 DOOR CLOSER LCN 4041HW/FA-689	88-H1	DOUBLE DOOR	2 x 3'-0"	7'-0"	1 3/4"	NONE	●	●	●	●	●	●	●	PUSH/PULL HANDLE, DEADBOLT, CLOSER, WEATHERSTRIPPING, DOOR SWEEP, THRESHOLD (HARDWARE BY MANUFACT.); ELECTRONIC OPENER
88-H3 WEATHERSTRIPPING PEAKO DS422	88-H2	SINGLE DOOR	3'-0"	7'-0"	1 3/4"	NONE	●	●	●	●	●	●	●	NO EXTERIOR HARDWARE; C/W MAGLOCK
88-H4 SADDLE THRESHOLD PEAKO 171A	88-H3	DOUBLE DOOR	2 x 3'-0"	7'-0"	1 3/4"	NONE	●	●	●	●	●	●	●	NO VISIONS PRODUCT BOOK; REQUIRES PUSH LATCH ON OUTSIDE OF DOOR
88-H4 DOOR SWEEP KIC CROWDER W-24	88-H4	DOUBLE DOOR	2 x 3'-0"	7'-0"	1 3/4"	NONE	●	●	●	●	●	●	●	PUSH/PULL HANDLE, CLOSER (HARDWARE BY MANUFACT.); ELECTRONIC OPENER
184 TRUMBEE WITH CYLINDER	EX	EXISTING DOOR	VARIES	VARIES	VARIES									

NOTE: DOORS IN A BARRIER-FREE PATH OF TRAVEL WILL HAVE A CLEAR SPACE BEYOND THE LATCH SIDE OF 600mm WHERE THE DOOR SWINGS TOWARD THE APPROACH SIDE AND 300mm WHERE THE DOOR SWINGS AWAY.



TOP OF SLAB
0' - 0'

TOP OF SLAB
0' - 0'

EXTERIOR WALL TYPE LEGEND	
WALL TYPE MARK	DESCRIPTION
W1	BRICK VENEER WALL CONSTRUCTION - 4" ARCHITECTURAL BRICK VENEER C/W GALVANIZED BRICK TIES - 1" AIR SPACE (OR AS NOTED ON SECTIONS) - TROWELED AIR BARRIER - 1/2" FIBERGLASS MATT FACED SILICONE TREATED GYPSUM BOARD - 3/8" 20ga STEEL STUDS @ 16" O.C. TO BE DESIGNED & STAMPED BY AN ENGINEER (SUBMIT SHOP DWGS)
W2	BRICK VENEER WALL CONSTRUCTION - 4" ARCHITECTURAL BRICK VENEER C/W GALVANIZED BRICK TIES - 1" AIR SPACE (OR AS NOTED ON SECTIONS) - 4" EXPANDED POLYSTYRENE INSULATION C/W NOTCHED DRAINAGE SYSTEM - TROWELED AIR BARRIER - 1/2" FIBERGLASS MATT FACED SILICONE TREATED GYPSUM BOARD - 8" 20ga STEEL STUDS @ 16" O.C. TO BE DESIGNED & STAMPED BY AN ENGINEER (SUBMIT SHOP DWGS) - R-20 FIBER GLASS INSULATION (TO FILL STUD SPACE) - 6 MIL POLY VAPOUR BARRIER; SEAL TO US OF ROOF DECK & BASE OF STUD @ FLOOR LEVEL - 1/2" GYPSUM WALL BOARD
W3	INSULATED METAL PANEL CONSTRUCTION - PRE FINISHED 4" THICK RIGID PANELS (R30) MOUNTED VERTICALLY (KINGSPAN Micro-Rib OR EQUIVALENT) - HORIZONTAL STRUCTURAL GIRTS - STRUCTURAL COLUMNS
W4	INSULATED METAL PANEL CONSTRUCTION - UPPER CANOPY WALLS - PRE FINISHED 4" THICK RIGID PANELS (R30) MOUNTED VERTICALLY (KINGSPAN Micro-Rib OR EQUIVALENT) - 8" STRUCTURAL STEEL GIRT (REFER TO STRUCTURAL DRAWINGS) - 1/2" FIBERGLASS MATT FACED SILICONE TREATED GYPSUM BOARD - 6" 20ga STEEL STUDS @ 16" O.C. TO BE DESIGNED & STAMPED BY AN ENGINEER (SUBMIT SHOP DWGS)
W5	BRICK VENEER WALL CONSTRUCTION - 4" ARCHITECTURAL BRICK VENEER C/W GALVANIZED BRICK TIES - 1" AIR SPACE (OR AS NOTED ON SECTIONS) - TROWELED AIR BARRIER - 1/2" FIBERGLASS MATT FACED SILICONE TREATED GYPSUM BOARD - 8" 20ga STEEL STUDS @ 16" O.C. TO BE DESIGNED & STAMPED BY AN ENGINEER (SUBMIT SHOP DWGS) - 4.5/4" VOID SPACE - 4" HS COLUMN - 6.3/4" VOID SPACE - 3/8" 20ga STEEL STUDS @ 16" O.C. TO BE DESIGNED & STAMPED BY AN ENGINEER (SUBMIT SHOP DWGS) - 1/2" FIBERGLASS MATT FACED SILICONE TREATED GYPSUM BOARD - TROWELED AIR BARRIER - 1" AIR SPACE (OR AS NOTED ON SECTIONS) - 4" ARCHITECTURAL BRICK VENEER C/W GALVANIZED BRICK TIES
W6	EFS PANEL CONSTRUCTION - DRIVE THRU CANOPY COLUMN - ACRYLIC STUCCO FINISH C/W MESH - 4" EXPANDED POLYSTYRENE INSULATION C/W NOTCHED DRAINAGE SYSTEM - TROWELED AIR BARRIER - 2 LAYERS TYPE X FRG GYPSUM BOARD - 8" 20ga STEEL STUDS @ 16" O.C. TO BE DESIGNED & STAMPED BY AN ENGINEER (SUBMIT SHOP DWGS) - 4.5/4" VOID SPACE - 4" HS COLUMN - 6.3/4" VOID SPACE - 3/8" 20ga STEEL STUDS @ 16" O.C. TO BE DESIGNED & STAMPED BY AN ENGINEER (SUBMIT SHOP DWGS) - 2 LAYERS TYPE X FRG GYPSUM BOARD - TROWELED AIR BARRIER - 4" EXPANDED POLYSTYRENE INSULATION C/W NOTCHED DRAINAGE SYSTEM - ACRYLIC STUCCO FINISH C/W MESH
W7	EFS WALL CONSTRUCTION - ACRYLIC STUCCO FINISH C/W MESH - 4" EXPANDED POLYSTYRENE INSULATION C/W NOTCHED DRAINAGE SYSTEM - TROWELED AIR BARRIER - 1/2" FIBERGLASS MATT FACED SILICONE TREATED GYPSUM BOARD - 8" 20ga STEEL STUDS @ 16" O.C. TO BE DESIGNED & STAMPED BY AN ENGINEER (SUBMIT SHOP DWGS) - R-20 FIBER GLASS INSULATION (TO FILL STUD SPACE)
W8	EFS WALL CONSTRUCTION - ACRYLIC STUCCO FINISH C/W MESH - 4" EXPANDED POLYSTYRENE INSULATION C/W NOTCHED DRAINAGE SYSTEM - TROWELED AIR BARRIER - 1/2" FIBERGLASS MATT FACED SILICONE TREATED GYPSUM BOARD - 8" 20ga STEEL STUDS @ 16" O.C. TO BE DESIGNED & STAMPED BY AN ENGINEER (SUBMIT SHOP DWGS) - R-20 FIBER GLASS INSULATION (TO FILL STUD SPACE) - 6 MIL POLY VAPOUR BARRIER; SEAL TO US OF ROOF DECK & BASE OF STUD @ FLOOR LEVEL - 1/2" GYPSUM WALL BOARD
W8A	EFS WALL CONSTRUCTION - ACRYLIC STUCCO FINISH C/W MESH - 4" EXPANDED POLYSTYRENE INSULATION C/W NOTCHED DRAINAGE SYSTEM - TROWELED AIR BARRIER - 1/2" FIBERGLASS MATT FACED SILICONE TREATED GYPSUM BOARD - 2" FURRING AS REQUIRED - 8" 20ga STEEL STUDS @ 16" O.C. TO BE DESIGNED & STAMPED BY AN ENGINEER (SUBMIT SHOP DWGS) - R-20 FIBER GLASS INSULATION (TO FILL STUD SPACE) - 6 MIL POLY VAPOUR BARRIER; SEAL TO US OF ROOF DECK & BASE OF STUD @ FLOOR LEVEL - 1/2" GYPSUM WALL BOARD
W9A	EFS WALL CONSTRUCTION - ACRYLIC STUCCO FINISH C/W MESH - 4" EXPANDED POLYSTYRENE INSULATION C/W NOTCHED DRAINAGE SYSTEM - TROWELED AIR BARRIER - 1/2" FIBERGLASS MATT FACED SILICONE TREATED GYPSUM BOARD - 3.5/8" 20ga STEEL STUDS @ 16" O.C. TO BE DESIGNED & STAMPED BY AN ENGINEER (SUBMIT SHOP DWGS) - 8" 20ga STEEL STUDS @ 16" O.C. TO BE DESIGNED & STAMPED BY AN ENGINEER (SUBMIT SHOP DWGS) - 6 MIL POLY VAPOUR BARRIER; SEAL TO US OF ROOF DECK & BASE OF STUD @ FLOOR LEVEL - 1/2" GYPSUM WALL BOARD
W9B	EFS WALL CONSTRUCTION - ACRYLIC STUCCO FINISH C/W MESH - 4" EXPANDED POLYSTYRENE INSULATION C/W NOTCHED DRAINAGE SYSTEM - TROWELED AIR BARRIER - 1/2" FIBERGLASS MATT FACED SILICONE TREATED GYPSUM BOARD - 6" 20ga STEEL STUDS @ 16" O.C. TO BE DESIGNED & STAMPED BY AN ENGINEER (SUBMIT SHOP DWGS) - 8" 20ga STEEL STUDS @ 16" O.C. TO BE DESIGNED & STAMPED BY AN ENGINEER (SUBMIT SHOP DWGS) - R-20 FIBER GLASS INSULATION (TO FILL STUD SPACE) - 6 MIL POLY VAPOUR BARRIER; SEAL TO US OF ROOF DECK & BASE OF STUD @ FLOOR LEVEL - 1/2" GYPSUM WALL BOARD
WX	EXISTING EXTERIOR AND PARTITION WALL TO REMAIN - FINISH IS TO BE DETERMINED ON SITE WHERE APPLICABLE - LOADBEARING WALLS IS TO BE DETERMINED BY STRUCTURAL - FIRE RATED WALLS ARE TO BE DETERMINED - EXISTING PARTITION NEEDS TO BE CONFIRMED IF MEETS CURRENT STANDARDS.

TOP OF SLAB
0' - 0'

TOP OF SLAB
0' - 0'

PARTITION TYPE LEGEND

WALL TYPE MARK	DESCRIPTION
P1	GYPSUM BOARD PARTITION TYPE P1 - 1/2" GYPSUM WALL BOARD - 4" 20ga STEEL STUDS @ 16" O.C. TO UNDERSIDE OF ROOF DECK - 1/2" GYPSUM WALL BOARD
P2	GYPSUM BOARD PARTITION TYPE P2 - 1/2" GYPSUM WALL BOARD - 3.5/8" 20ga STEEL STUDS @ 16" O.C. TO UNDERSIDE OF ROOF DECK - 1/2" GYPSUM WALL BOARD
P6	1 HR. F/R PARTITION TYPE P6: ULC Des W407 - 5/8" TYPE X GYPSUM WALL BOARD - 3.5/8" (OR TO MATCH EXISTING) 20ga STEEL STUDS @ 16" O.C. TO UNDERSIDE OF ROOF DECK (DOUBLE TRACK @ TOP; GWS SEALED TO US DECK W/ COMPRESSIBLE NON-COMBUSTIBLE FILLER) - 5/8" TYPE X GYPSUM WALL BOARD

ROOF TYPE LEGEND

ROOF TYPE MARK	DESCRIPTION
R1	ROOF CONSTRUCTION: - 2 PLY EPDM ROOFING MEMBRANE - 1/2" PLYWOOD SHEATHING - R-20 4" RIGID INSULATION - 6 MIL POLY VAPOUR BARRIER - 1/2" PLYWOOD SHEATHING - 1 1/2" METAL ROOF DECK (REFER TO STRUCTURAL) - ROOF JOIST (REFER TO STRUCTURAL) PROVIDE NON-SLIP PAVERS FROM ROOF HATCH TO AROUND ALL HVAC UNITS, AND EXHAUST FANS
S1	ALUMINIUM - SOFFIT - PREFINISHED ALUMINIUM SOFFIT - 1/2" FIBERGLASS MATT FACED SILICONE TREATED GYPSUM BOARD - 3.5/8" 20ga STEEL STUDS @ 16" O.C. TO BE DESIGNED & STAMPED BY AN ENGINEER (SUBMIT SHOP DWGS)
S2	INSULATED METAL PANEL CONSTRUCTION - PREFINISHED KINGSPAN INSULATED METAL PANEL C/W ALL APPLICABLE CONNECTION HARDWARE - 8" STRUCTURAL STEEL GIRT (REFER TO STRUCTURAL DRAWINGS) - 1/2" FIBERGLASS MATT FACED SILICONE TREATED GYPSUM BOARD - 6" 20ga STEEL STUDS @ 16" O.C. TO BE DESIGNED & STAMPED BY AN ENGINEER (SUBMIT SHOP DWGS)

keddie architecture inc
438-333-3383
10745 48 Ave SW
Edmonton, Alberta
T6C 2P9
info@keddie.ca

SEAL

CONSULTANT

SEAL

CONSULTANT

SEAL

NOTES

NO.	DATE	DESCRIPTION	BY	CHK
3	11-07-15	PRICING		ck ck
2	11-07-06	BUILDING PERMIT		ck ck
1	11-03-03	DEVELOPMENT PERMIT		ck ck

NO. 1748AADD3 REVISION / DRAWING ISSUE DRAWN/REVIEW

CONSTRUCTION MANAGER

THIS DRAWING, AS AN INSTRUMENT OF SERVICE IS THE PROPERTY OF KEDDIE ARCHITECTURE INC. THE COPYRIGHT IN THE SAME REMAINS RESERVED TO THEM. NO REPRODUCTION IS ALLOWED WITHOUT THE PERMISSION OF KEDDIE ARCHITECTURE INC. AND WHEN MADE MUST BEAR ITS NAME. THE DRAWING IS NOT TO BE SCALED. THE CONTRACTOR IS TO VERIFY DIMENSIONS AND DATA NOTED HEREIN WITH THE CONDITIONS ON SITE AND IS RESPONSIBLE FOR REPORTING ANY DISCREPANCY TO KEDDIE ARCHITECTURE INC FOR ADJUSTMENT.

PROJECT

2085 SOUTH EDMONTON ADDITION

10127 + 10133 - 34th AVENUE NW EDMONTON, AB

DRAWING TITLE

LEGENDS + SCHEDULES

DRAWING ISSUED

BUILDING PERMIT

PROJECT NO.	PLOT DATE
1102	2011-07-26
DRAWING NO.	SCALE
A-6.0	N/A