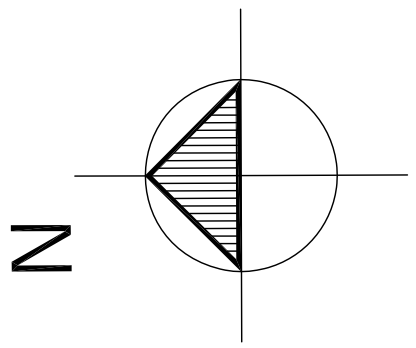


DESIGN & INSTALL ALL MECHANICAL SYSTEMS TO THE FOLLOWING CODES AND STANDARDS.

- ALBERTA BUILDING CODE - LATEST EDITION
- NATIONAL FIRE CODE - LATEST EDITION
- NATIONAL BUILDING CODE - LATEST EDITION
- NATIONAL FIRE CODE - LATEST EDITION
- NFPA-13 & ALL OTHER APPLICABLE NFPA SECTIONS
- CANADIAN PLUMBING CODE - LATEST EDITION
- NATURAL GAS INSTALLATION CODE GSA-B149
- SMAACNA

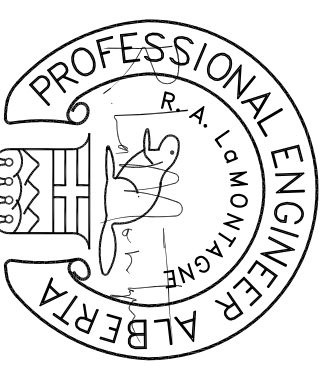


FIELD REVIEW:
THE ENGINEER HAS EXAMINED ONLY THE PORTIONS OF THE PROJECT WHICH ARE SHOWN ON THE DRAWINGS. THE ENGINEER HAS NOT CONDUCTED A VISUAL SURVEY OF THE ENTIRE PROJECT. THE ENGINEER'S RESPONSIBILITY FOR THE SAFETY OF THE PROJECT IS LIMITED TO THE PORTIONS OF THE PROJECT WHICH ARE SHOWN ON THE DRAWINGS.

SITE SAFETY:
THE ENGINEER ASSUMES NO RESPONSIBILITY FOR THE SAFETY OF THE PROJECT. THE ENGINEER'S RESPONSIBILITY FOR THE SAFETY OF THE PROJECT IS LIMITED TO THE PORTIONS OF THE PROJECT WHICH ARE SHOWN ON THE DRAWINGS.

CONTRACTORS:
THE ENGINEER HAS REVIEWED THE CONTRACT DOCUMENTS AND HAS ADVISED THE CONTRACTORS OF ANY DEFICIENCIES. THE CONTRACTORS ARE RESPONSIBLE FOR THE SAFETY OF THE PROJECT AND FOR THE PROTECTION OF THE PUBLIC. THE CONTRACTORS SHALL BE RESPONSIBLE FOR THE PROTECTION OF THE PUBLIC AND FOR THE SAFETY OF THE PROJECT.

DESIGNING REVIEW:
THE ENGINEER HAS REVIEWED THE DESIGN DOCUMENTS AND HAS ADVISED THE CONTRACTORS OF ANY DEFICIENCIES. THE CONTRACTORS ARE RESPONSIBLE FOR THE SAFETY OF THE PROJECT AND FOR THE PROTECTION OF THE PUBLIC. THE CONTRACTORS SHALL BE RESPONSIBLE FOR THE PROTECTION OF THE PUBLIC AND FOR THE SAFETY OF THE PROJECT.



24/09/12
PERMIT TO PRACTICE P10904

NO.	DESCRIPTION	DATE	CK
1	ISSUED FOR BP	24/08/12	
2	ISSUED FOR TENDER	24/09/12	

DMH Designs Ltd.
117 Royal Oak Green NW
Calgary, Alberta T3G 6A7
Tel: (403) 620-3170
Fax: (403) 208-4185

CLIENT:
VISIONS
CALGARY, ALBERTA

PROJECT:
VISIONS BLDG
ST ALBERT, ALBERTA

TITLE:
HVAC MAIN FLOOR PLAN

SCALE	DATE	DRAWING NO.
AS NOTED	AUGUST /12	M2-1
DESIGNED BY	CHECKED BY	
DP	DP	
JOB # 12-756	DATE	REVISION: 1
PLOTTED:	COPYED:	

ROOF TOP UNIT SCHEDULE
(LENNOX OR APPROVED EQUAL)

TAG	MODEL	HEATING CAPACITY INPUT	OUTPUT	COOLING CAPACITY (NET)	AIR VOL (CFM)	POWER	REMARKS
AC-1	LENNOX LEH120H4BH	240 MBH	192 MBH	120 MBH	4000	575V/3/60	EACH UNIT TO BE C/W - 50MM DISPOSABLE FILTER - ROOF CURB - ECONOMIZER - CONTROL TRANSFORMER - 24 VOLT SPACE HEAT/COOL THERMOSTAT - BELT DRIVE - POWER EXHAUST - FACTORY INSTALLED DISCONNECT SWITCH
AC-2	LENNOX LEH120H4BH	240 MBH	192 MBH	120 MBH	4000	575V/3/60	
AC-3	LENNOX LEH120H4BH	240 MBH	192 MBH	120 MBH	4000	575V/3/60	

HVAC NOTES:
- ROOF TOP UNIT ELECTRICAL DATA IS AS FOLLOWS:
MODEL L6C220 - (41 575V/3/60) MINIMUM CIRCUIT CAPACITY=21, MAXIMUM OVERTURRENT PROTECTION=25AMPS
- ROOF TOP UNIT WEIGHT IS APPROX. 1400 LBS PER UNIT

UNIT HEATER SCHEDULE
(REZNOR OR APPROVED EQUAL)

TAG	MODEL	TOTAL INPUT (BTUH)	TOTAL OUTPUT (BTUH)	WEIGHT (MMW)	MOTOR (V/PH/Hz)	POWER (HP)	REMARKS
UH-1 & UH-2	UP4P-126	120,000	99,600	100#	115V/1/60	FRACT	TO BE PROVIDED WITH: - ELECTRIC SPARK IGNITION - 24V SPACE THERMOSTAT

ELECTRIC HEATER SCHEDULE
(OUELLET)

TAG	LOCATION	MODEL	TOTAL HEAT OUTPUT (KW)	POWER	REMARKS
FF-1	FRONT VESTI.	OACO-3000	3	208/240/1/60	CEILING MOUNTED, FULLY RECESSED, C/W INT. THERMOSTAT
FF-2	MECH RM & ELECT RM	OACO-3500	3	208/240/1/60	WALL MOUNTED, SEMI-RECESSED, C/W INT. THERMOSTAT

ELECTRIC BASEBOARD HEATER SCHEDULE
(OUELLET)

TAG	LOCATION	MODEL	TOTAL HEAT OUTPUT (KW)	POWER	REMARKS
1.5KW	SERVICE STORAGE	OFM-1508	1.5	208/240/1/60	ELECTRIC BASEBOARD HTR, C/W INT. THERMOSTAT
2.5KW	CRAML SPACE	OFM-2507	2.5	347/1/60	ELECTRIC BASEBOARD HTR, C/W INT. THERMOSTAT

HEAT RECOVERY VENTILATORS
(VANE OR APPROVED EQUAL)

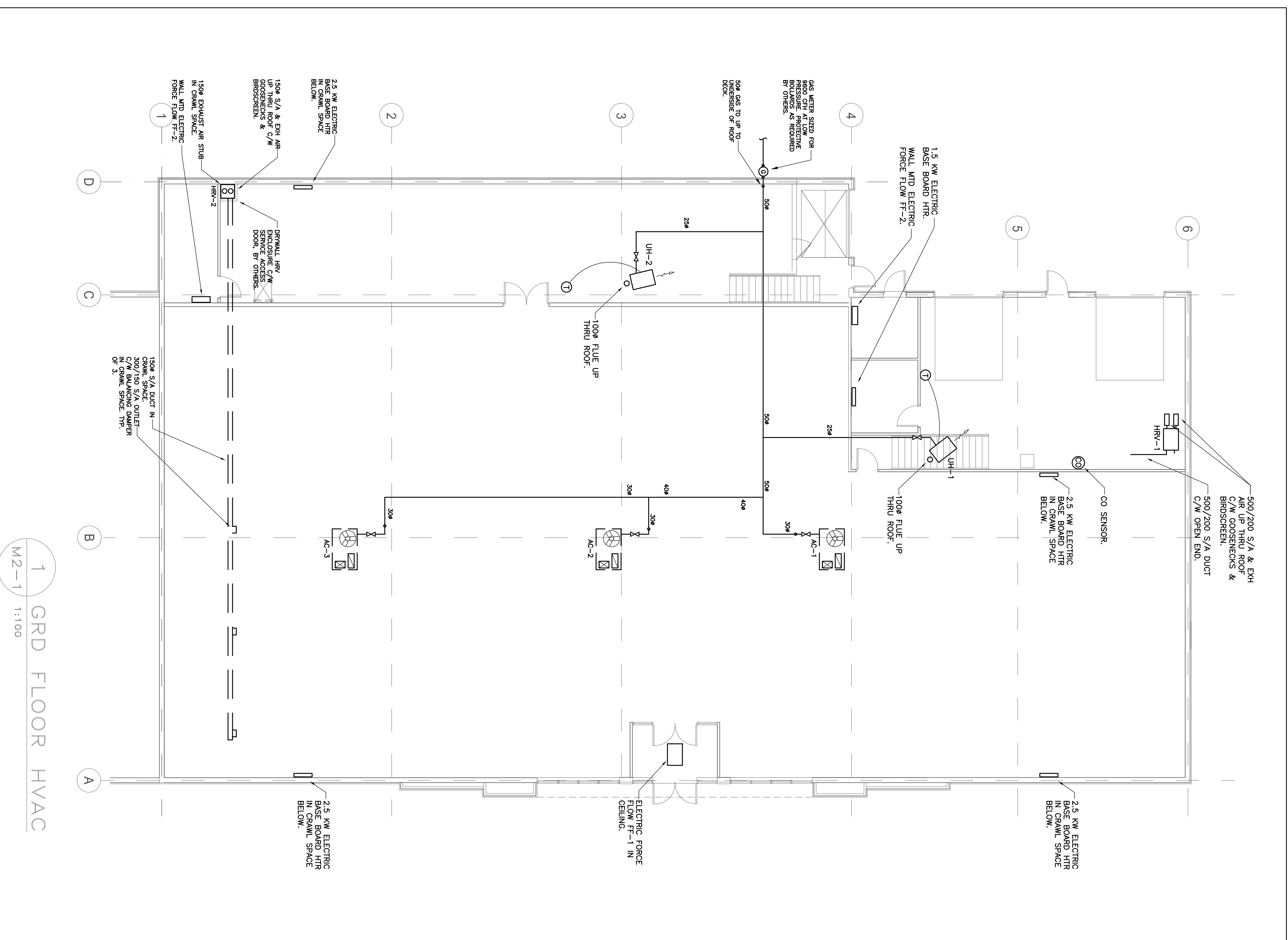
TAG	MODEL	VOLUME (CFM)	POWER	REMARKS
HRV-1	12LQDPWXS	1300 CFM	120V/1/60, 11.7 A	POLYPROPYLENE CORE, 3 SPEED MOTOR, WASHABLE FILTER.
HRV-2	2001 HRV	235 CFM	120V/1/60, 202W	POLYPROPYLENE CORE, 2 SPEED MOTOR, WASHABLE FILTER.

CONDENSATE DRAIN HRV-1 TO MOP SINK IN SHOP AREA.
CONDENSATE DRAIN HRV-2 TO FD-1 FLOOR DRAIN ADJACENT TO HRV SHAFT.

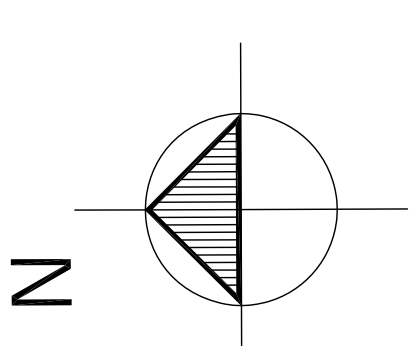
CO DETECTION SYSTEM

PROVIDE A STAND ALONE CO DETECTION SYSTEM TO INTERLOCK WITH HRV-1, AS NOTED ON THE DRAWINGS. PROVIDE A STAND ALONE CO DETECTION SYSTEM TO INTERLOCK WITH HRV-1, AS NOTED ON THE DRAWINGS. PROVIDE A STAND ALONE CO DETECTION SYSTEM TO INTERLOCK WITH HRV-1, AS NOTED ON THE DRAWINGS.

1 GRD FLOOR HVAC
M2-1 1:100



DESIGN & INSTALL ALL MECHANICAL SYSTEMS TO THE FOLLOWING CODES AND STANDARDS:
 ALBERTA BUILDING CODE – LATEST EDITION
 ALBERTA FIRE CODE – LATEST EDITION
 NATIONAL BUILDING CODE – LATEST EDITION
 NATIONAL FIRE CODE – LATEST EDITION
 NFPA-13 & ALL OTHER APPLICABLE NFPA SECTIONS
 CANADIAN PLUMBING CODE – LATEST EDITION
 NATURAL GAS INSTALLATION CODE CGA-B149
 SMACNA



FIELD REVIEW:
 THE ENGINEER HAS REVIEWED THE PERMITS, SITE INSPECTIONS TO THE CONTRACT DOCUMENTS, AND THE REVISIONS TO THE CONTRACT DOCUMENTS.

THE ENGINEER ASSUMES NO RESPONSIBILITY FOR THE SAFETY OF OTHERS OR THE RESPONSIBILITY FOR THE CONSTRUCTION, HEALTH AND SAFETY ACT COMPLIANCE EXAMINATION.
 REVISIONS ARE NOT TO BE USED FOR CONSTRUCTION UNLESS REVIEWED AND APPROVED BY THE AUTHORITY HAVING JURISDICTION. THIS AUTHORITY, BASED ON APPLICABLE CODES, THESE CODES MAKE UNDESIRABLE AND THEREFORE ARE THE RESPONSIBILITY OF THE OWNER AND/OR CONTRACTOR.

COPYRIGHTS: NOTICES AND RELATED DOCUMENTS ARE THE PROPERTY OF THE ENGINEER. PERMISSION IS GRANTED TO THE CONTRACTOR TO MAKE COPIES OF THIS DRAWING FOR THE PROJECT FOR WHICH IT WAS ISSUED AND TO BE USED ONLY FOR THE PROJECT FOR WHICH IT WAS ISSUED AND NOT TO BE REPRODUCED OR TRANSMITTED IN ANY FORM OR BY ANY MEANS, ELECTRONIC OR MECHANICAL, INCLUDING PHOTOCOPYING, RECORDING, OR BY ANY INFORMATION STORAGE AND RETRIEVAL SYSTEM, WITHOUT THE WRITTEN PERMISSION OF THE ENGINEER. THE CONTRACTOR SHALL BE RESPONSIBLE FOR THE PROTECTION OF THIS DRAWING FROM UNAUTHORIZED REPRODUCTION WITH ANY PART OF THE WORK.



03/10/12
 PERMIT TO PRACTICE P10904

NO.	DESCRIPTION	DATE	CK
1	ISSUED FOR BP	24/08/12	
2	ISSUED FOR TENDER	24/09/12	
3	ISSUED WITH WEeping TILE SYSTEM	03/10/12	

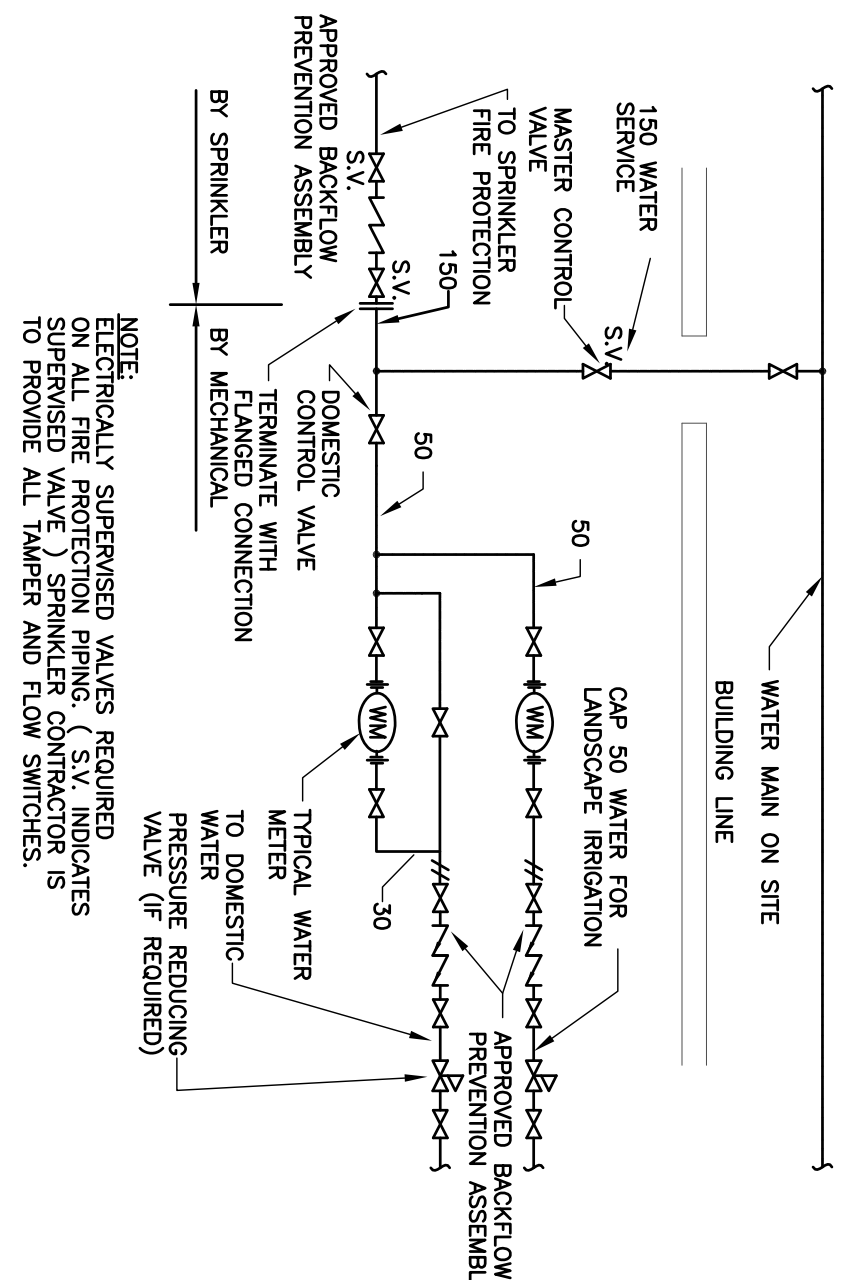
DMH Designs Ltd.
 117 Royal Oak Green NW
 Calgary, Alberta T3G 6A7
 Tel: (403) 620-3170
 Fax: (403) 208-4185

CLIENT
 VISIONS
 CALGARY, ALBERTA

PROJECT
 VISIONS BLDG
 ST ALBERT, ALBERTA

TITLE PLBG, DRAINAGE & SPRINKLER MAIN FLOOR PLAN		DRAWING NO. M2-2	
SCALE AS NOTED	DWG AUGUST /12	DESIGNED BY DP	CHECKED BY DP
DATE AS NOTED	DATE AUGUST /12	DWG 12-756	REVISION: 1
PLotted:	COPYED:		

2 WATER SERVICE DETAIL

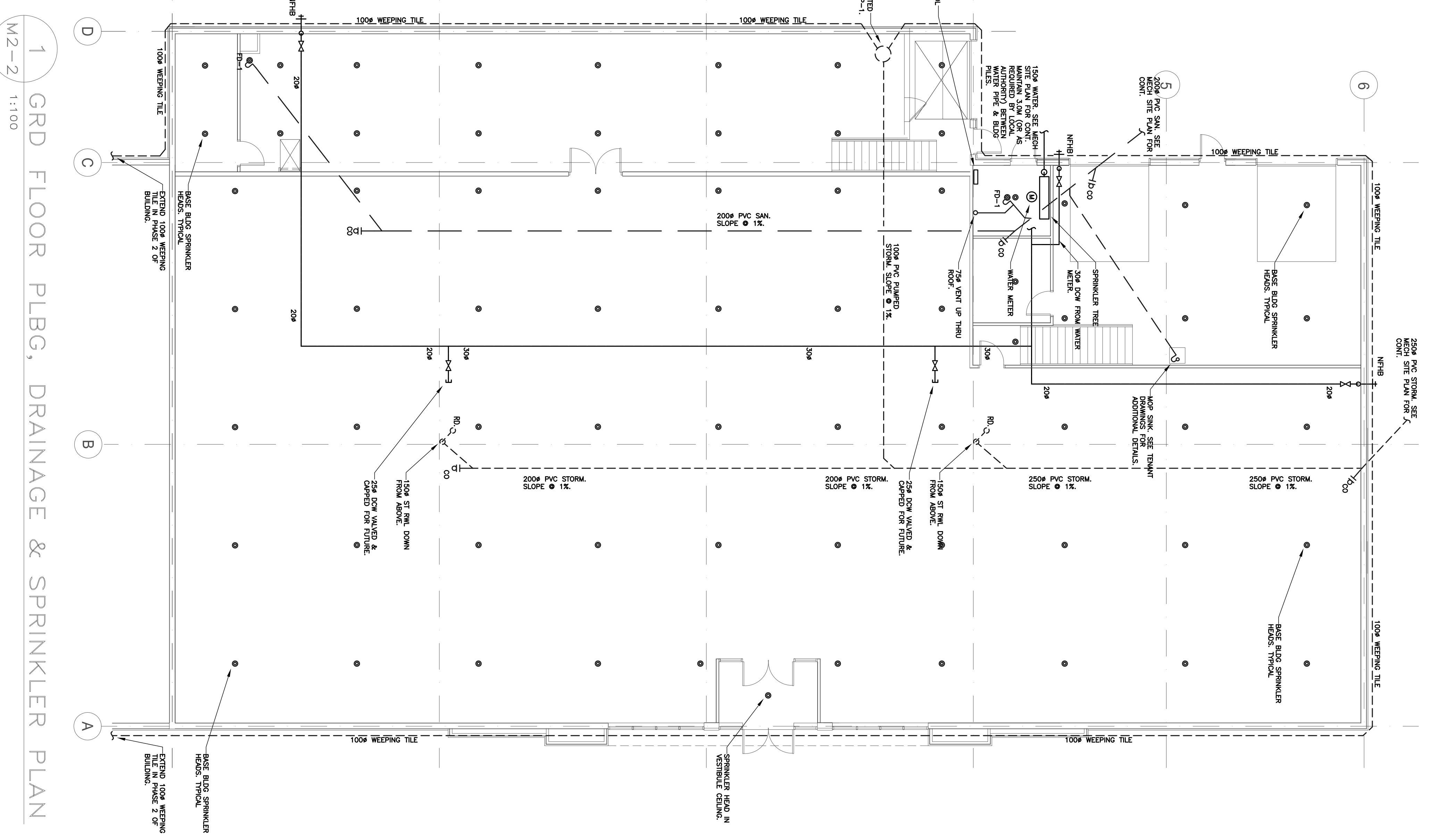


NOTE: ELECTRICALLY SUPERVISED VALVES REQUIRED ON ALL FIRE PROTECTION PIPING. (S.V. INDICATES SUPERVISED VALVE, SPRINKLER CONTROLLER IS TO PROVIDE ALL WATER AND TANK SUPERVISOR.)

PUMP SCHEDULE

(AS NOTED OR APPROVED EQUAL)

TAG	LOCATION/DUTY	MODEL	CAPACITY L/S	HEAD PRESS.	POWER	REMARKS
P-1	WEeping TILE SWAMP PUMP	BARNES SE411	2.0	4.1 M	0.4 HP, 120V/1/60	PROVIDE WITH CONTROL PANEL & SINGLE FLOAT PROVIDE C/W 600mm DIA PLASTIC PRE-FABRICATED SWAMP 2100 mm DEEP. PROVIDE WITH A SOLID COVER.



1 GRD FLOOR PLBG, DRAINAGE & SPRINKLER PLAN

M2-2 1:100

