

**EXISTING ROOF TOP UNIT SCHEDULE**

TAG	MODEL	HEATING CAPACITY INPUT	HEATING CAPACITY OUTPUT	COOLING CAPACITY (NET)	AIR VOL (CFM)	POWER	REMARKS
RUU-55	LENNOX L0H120H4	240 MBH	192 MBH	120 MBH	4000	575V/3/60	EACH UNIT TO BE C/W WITH DISINFECTABLE FILTER
RUU-56	LENNOX L0H120H4	240 MBH	192 MBH	120 MBH	4000	575V/3/60	EACH UNIT TO BE C/W WITH DISINFECTABLE FILTER
RUU-57	LENNOX L0H120H4	240 MBH	192 MBH	120 MBH	4000	575V/3/60	EACH UNIT TO BE C/W WITH DISINFECTABLE FILTER

**EXISTING UNIT HEATER SCHEDULE**

TAG	MODEL	TOTAL INPUT (BTUH)	TOTAL OUTPUT (BTUH)	VENT SIZE (%)	MOTOR (V/PH/Hz)	POWER (HP)	REMARKS
UH-6	UF24-200A	195,000	156,000	5%	115V/1/60	FRACT	TO BE PROVIDED WITH: - ELECTRONIC SPARK SPOILER - 24V SPACE THERMOSTAT - FACTORY INSTALLED DISCONNECT SWITCH

**EXISTING ELECTRIC HEATER SCHEDULE**

TAG	LOCATION	MODEL	TOTAL HEAT OUTPUT (KW)	POWER	REMARKS
EH-7	FRONT VEST.	OACD-4008	4	208V/1/60	CEILING MOUNTED, FULLY RECESSED, C/W INT. THERMOSTAT

**EXHAUST FAN SCHEDULE**

TAG	MAKE	MODEL	VOLUME (CFM)	START (F50)	POWER	REMARKS
EF-1	BROAN	L-100	100	0.25	FRACT HP 120V/1/60	DIV 16 TO INTERLOCK WITH WASHROOM LIGHTS
EF-2	BROAN	L-100	100	0.25	FRACT HP 120V/1/60	DIV 16 TO INTERLOCK WITH WASHROOM LIGHTS
EF-3	BROAN	L-200	200	0.25	FRACT HP 120V/1/60	DIV 16 TO PROVIDE A WALL SWITCH

**GRILLE & DIFFUSER SCHEDULE**

TAG	SIZE	MODEL	NECK SIZE	FINISH	REMARKS
A	600 X 600	SCD	SEE DWGS	WHITE	STEEL 3 CONE SQUARE DIFFUSER
B	SEE DWGS	520	SEE DWG	WHITE	STEEL DOUBLE DEFLECTION C/W PLenum FOR DUCT CONNECTION
C	SEE DWGS	535	--	WHITE	STEEL SINGLE DEFLECTION 1/A OR R/A GRILLE
E	SEE DWGS	80	--	WHITE	ALUMINUM ECO GRATE GRILLE FOR LAY-IN APPLICATION OR C/W TIRE F BORDER

**HEAT RECOVERY VENTILATORS**

TAG	MODEL	VOLUME (CFM)	POWER	REMARKS
HRY-1	12LCDP-WXSN	1200	120V/1/60, 11.7 A	POLYPROPYLENE CORE, 3 SPEED MOTOR, WASHABLE FILTER.

**CO DETECTION SYSTEM**

PROVIDE A STAND ALONE CO DETECTION SYSTEM. SYSTEM TO INTERLOCK WITH HRY-1, AS NOTED ON THE DRAWINGS BY DIV 16.

DESIGN & INSTALL ALL MECHANICAL SYSTEMS TO THE FOLLOWING CODES AND STANDARDS:  
 ALBERTA BUILDING CODE - LATEST EDITION  
 NATIONAL BUILDING CODE - LATEST EDITION  
 NATIONAL FIRE CODE - LATEST EDITION  
 NFPA-13 & ALL OTHER APPLICABLE NFPA SECTIONS  
 CANADIAN PLUMBING CODE - LATEST EDITION  
 NATIONAL GAS INSTALLATION CODE CSA-B149  
 SMACNA

**FIELD REVIEW:**  
 THE ENGINEER HAS BEEN ADVISED BY THE CONTRACTOR THAT THE WORKERS HAVE BEEN ADVISED OF THE REQUIREMENTS OF THE CONTRACT DOCUMENTS.  
**SITE SAFETY:**  
 THE ENGINEER ASSUME NO RESPONSIBILITY FOR ON-SITE WORKER SAFETY FOR OTHER THAN THE WORK OF THE ENGINEER.  
**PLANS EXAMINATION:**  
 THE ENGINEER HAS REVIEWED THE PLANS AND FOUND THEM TO BE IN ACCORDANCE WITH THE REQUIREMENTS OF THE CONTRACT DOCUMENTS. THESE COSTS ARE UNDERSHOWN AND THEREFORE, ARE THE RESPONSIBILITY OF THE OWNER AND/OR CONTRACTOR.

**CONTRACTOR'S:**  
 ALL DRAWINGS, NOTES AND RELATED DOCUMENTS ARE THE PROPERTY OF THE ENGINEER. THE CONTRACTOR SHALL BE RESPONSIBLE FOR THE PROTECTION OF THE DRAWINGS AND DOCUMENTS IN HIS POSSESSION. THE CONTRACTOR SHALL BE RESPONSIBLE FOR THE PROTECTION OF THE DRAWINGS AND DOCUMENTS IN HIS POSSESSION. THE CONTRACTOR SHALL BE RESPONSIBLE FOR THE PROTECTION OF THE DRAWINGS AND DOCUMENTS IN HIS POSSESSION.



18/05/12  
 Permit to Practice P10904

NO.	DESCRIPTION	DATE	CK
1	ISSUED FOR REVIEW	07/05/12	
2	ISSUED WITH LANDLORDS COMMENTS	18/05/12	

**DMH Designs Ltd.**  
 117 Royal Oak Green NW  
 Calgary, Alberta T3G 6A7  
 Tel: (403) 620-3170  
 Fax: (403) 208-4185

**CLIENT:**  
 VISIONS  
 CALGARY, ALBERTA

**PROJECT:**  
 VISIONS ELECTRONICS  
 #590, 5000 EMERALD DR.  
 SHERWOOD PARK, ALBERTA

**TITLE:**  
 HVAC FLOOR PLANS & MECHANICAL SCHEDULES

**SCALE:**  
 AS NOTED

**DRAWN BY:**  
 DP

**CHECKED BY:**  
 DP

**DATE:**  
 MAY 02/12

**DRAWING NO.:**  
 M2-1

**JOB #:**  
 12-743

**DATE:**  
 JUNE

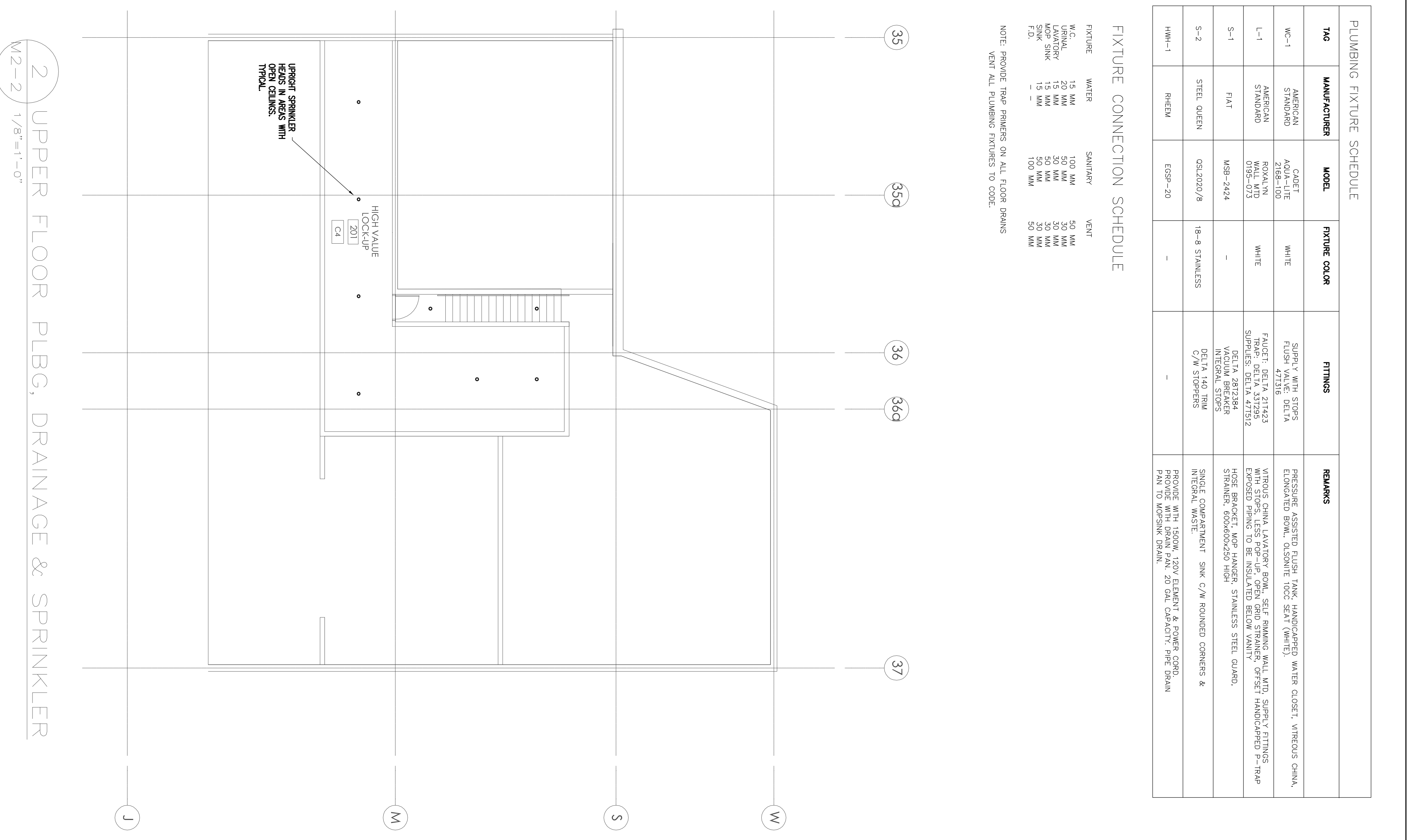
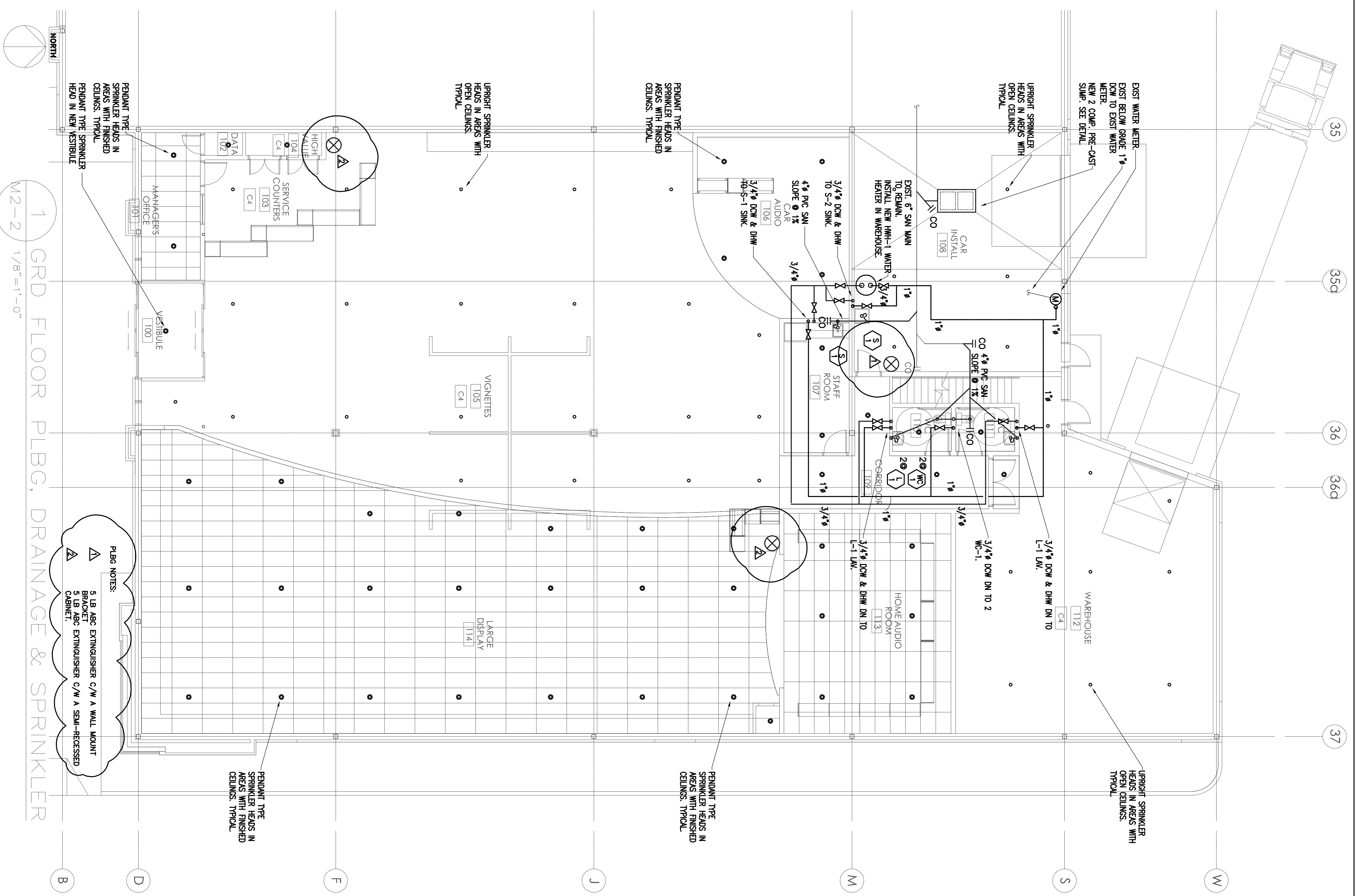
**REVISION:**  
 1

TAG	MANUFACTURER	MODEL	FIXTURE COLOR	FITTINGS	REMARKS
MC-1	AMERICAN STANDARD	ACDEL-100	WHITE	SUPPLY WITH STOPS FLUSH VALVE DELTA	PRESSURE ASSISTED FLUSH TANK, HANDICAPPED WATER CLOSET, VITREOUS CHINA, ELONGATED BOWL, OLSOINTE TOOC SEAT (WHITE).
L-1	AMERICAN STANDARD	ROXALYN WALL MTD 019B-073	WHITE	FRACIT, DELTA 21723 TRAP SPPRLES, DELTA 47152	VITREOUS CHINA LAVATORY BOWL, SELF RIMMING WALL MTD, SUPPLY FITTINGS WITH STOPS, LESS POP-UP, OPEN GRID STRAINER, OFFSET HANDICAPPED P-TRAP EXPOSED PIPING TO BE INSULATED BELOW VANITY
S-1	FIAT	MSB-2424	-	VACUUM BREAKER DELTA 3123	HOSE BRACKET, WOP HANGER, STAINLESS STEEL GUARD.
S-2	STEEL QUEEN	QSL2020/8	18-8 STAINLESS	DELTA 287284 DELTA 3123 C/W STOPPERS	SINGLE COMPARTMENT SINK C/W ROUNDED CORNERS & INTERIAL WASTE
HW-1	RHEEM	EGSP-20	-	-	PROVIDE WITH 1500W, 120V ELEMENT & POWER CORD. PROVIDE WITH DRAIN PAN, 20 GAL CAPACITY, PIPE DRAIN PAN TO MS-SINK DRAIN.

FIXTURE CONNECTION SCHEDULE

FIXTURE	WATER	SANITARY	VENT
W.C.	15 MM	100 MM	50 MM
WASH SINK	15 MM	50 MM	30 MM
LAVATORY	15 MM	50 MM	30 MM
MCP SINK	15 MM	50 MM	30 MM
FID	100 MM	100 MM	50 MM

NOTE: PROVIDE TRAP PRIMERS ON ALL FLOOR DRAINS  
VENY ALL PLUMBING FIXTURES TO CODE.



DESIGN & INSTALL ALL MECHANICAL SYSTEMS TO THE FOLLOWING CODES AND STANDARDS:  
ALBERTA BUILDING CODE - LATEST EDITION  
NATIONAL BUILDING CODE - LATEST EDITION  
NATIONAL FIRE CODE - LATEST EDITION  
NFPA-13 & ALL OTHER APPLICABLE NFPA SECTIONS  
CANADIAN PLUMBING CODE - LATEST EDITION  
NATIONAL GAS INSTALLATION CODE CSA-B149  
SASKANA

**FIELD REVIEW:**  
THE ENGINEERS HAVE BEEN ADVISED ONE FOR PERSONS SEE REFERENCES TO THE DRAWING DOCUMENTS.  
**SITE SAFETY:**  
THE ENGINEERS ASSUME NO RESPONSIBILITY FOR ON-SITE WORKER SAFETY FROM OTHER CONTRACTORS. THESE COSTS ARE UNDERSERVED AND THEREFORE, ARE THE RESPONSIBILITY OF THE OWNER AND/OR CONTRACTOR.  
**PLANS EXAMINATION:**  
BY THE AUTHORITY HAVING JURISDICTION, THIS APPROVED, BEING ON APPROVED DRAWINGS, THESE COSTS ARE UNDERSERVED AND THEREFORE, ARE THE RESPONSIBILITY OF THE OWNER AND/OR CONTRACTOR.  
**CONTRACTS:**  
ALL CONTRACTS, TERMS AND RELATED DOCUMENTS ARE THE PROPERTY OF THE ENGINEER. THE ENGINEER SHALL BE RESPONSIBLE FOR THE PROTECTION OF THE REPRODUCTION OF DRAWINGS AND DOCUMENTS IN PART OR IN WHOLE IS NOT TO BE USED FOR ANY OTHER PROJECT WITHOUT THE WRITTEN CONSENT OF THE ENGINEER.  
**DRAWING REVIEW:** OWNER, THE CONTRACTOR AND DESIGN APPROVER ALL AGREE TO HOLD THE ENGINEER HARMLESS FROM AND AGAINST ALL LIABILITY AND DAMAGES, INCLUDING REASONABLE ATTORNEY'S FEES AND COSTS, THAT MAY BE INCURRED BY THE ENGINEER/DESIGNER FROM THE PROCEEDING WITH ANY PART OF THE WORK.



18/05/12  
Permit to Practice P10904

NO.	DESCRIPTION	DATE	CK
1	ISSUED FOR REVIEW	02/05/12	
2	ISSUED WITH LANDLORDS COMMENTS	18/05/12	

**DMH Designs Ltd.**  
117 Royal Oak Green NW  
Calgary, Alberta T3G 6A7  
Tel: (403) 620-3170  
Fax: (403) 208-4185

**CLIENT:**  
VISIONS  
CALGARY, ALBERTA

**PROJECT:**  
VISIONS ELECTRONICS  
#590, 5000 EMERALD DR.  
SHERWOOD PARK, ALBERTA

**TITLE:**  
PLBG, DRAINAGE & SPRINKLER FLOOR  
PLANS & MECHANICAL SCHEDULES

**SCALE:**  
AS NOTED

**DATE:**  
MAY 02/12

**DRAWN BY:**  
DP

**CHECKED BY:**  
DP

**DRAWING NO.:**  
M2-2

**JOB #:**  
12-743

**DATE:**  
JUNE

**REVISION:**  
1

